

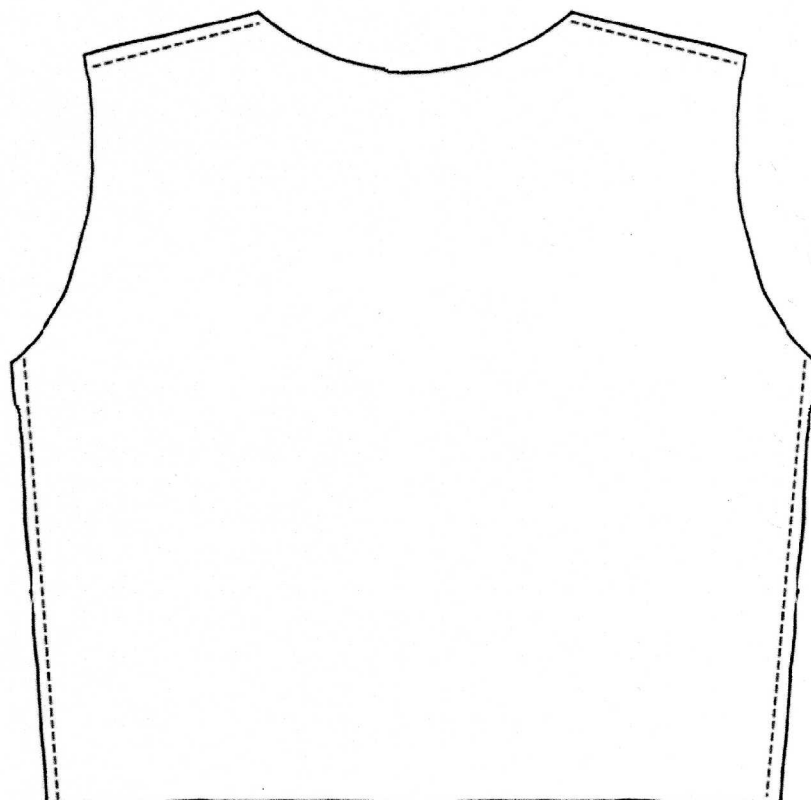
After cutting open up shell pieces like the diagram to the right.

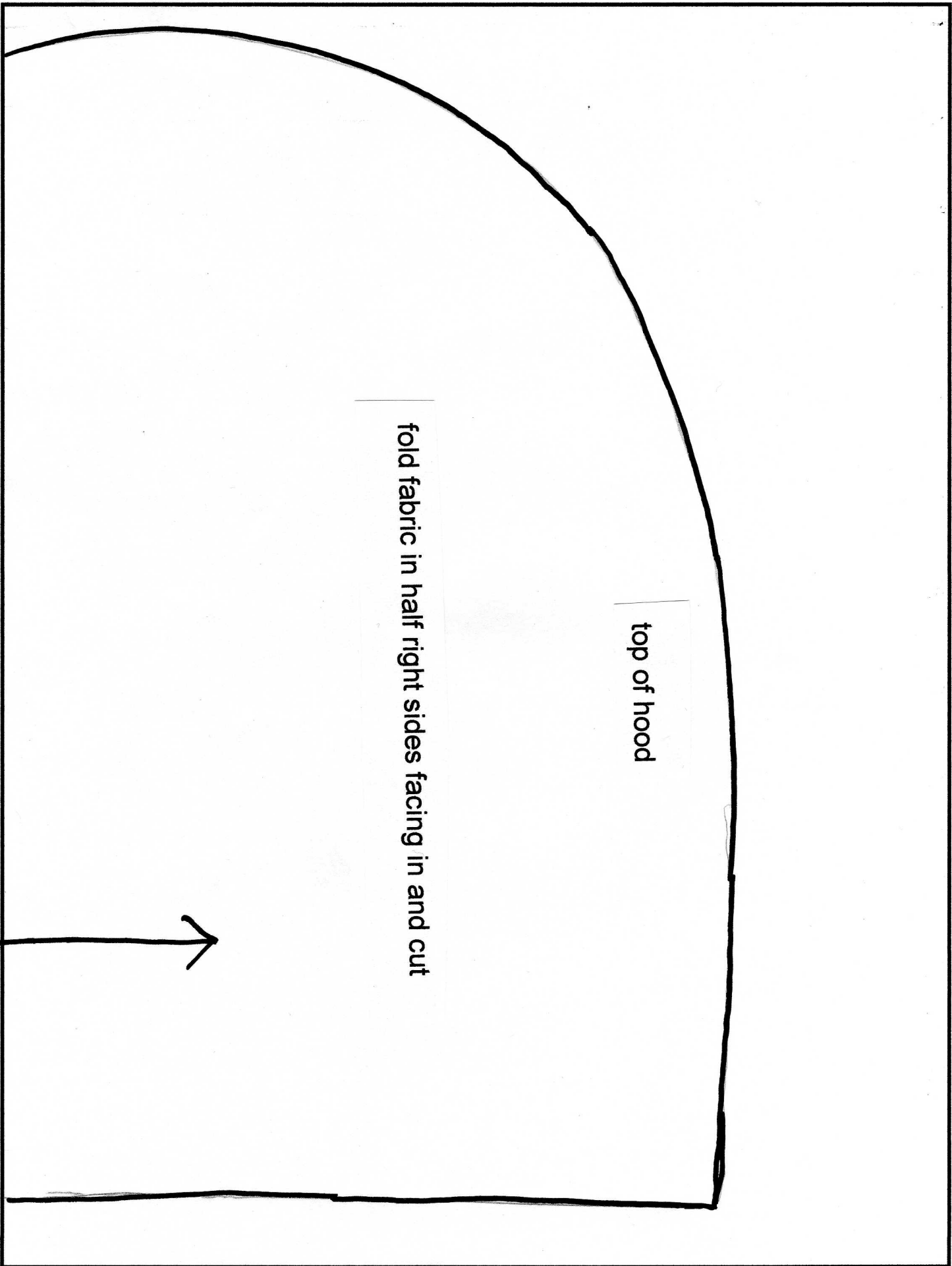
With right sides together sew at dotted lines at shoulders and sides.

Turn both the hood and shell right sides out.

Pin the hood to the shell placing right sides together and sew.

Recommended fabrics: fleece or felt



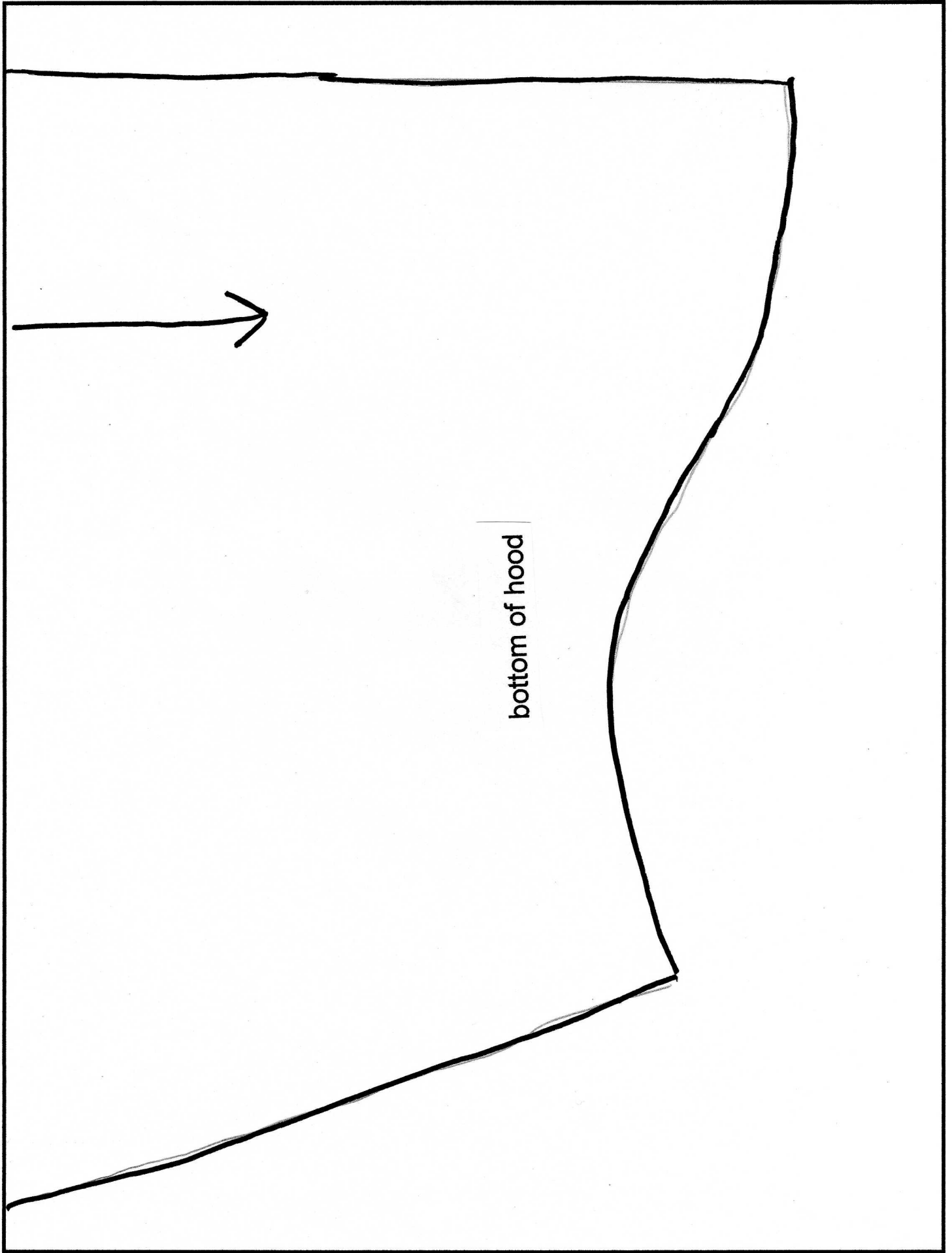


A hand-drawn diagram of a hood pattern piece. The shape is roughly rectangular with a curved top edge. A label 'top of hood' is placed near the top curve. Another label 'fold fabric in half right sides facing in and cut' is placed vertically in the center. An arrow points to the left edge of the pattern.

top of hood

fold fabric in half right sides facing in and cut

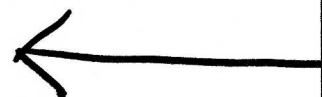


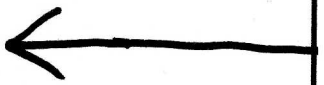


bottom of hood

fold fabric and align this side on fold before cutting

top





cut two of these

bottom

